

RE

# MEETINGS

AT THEIR BEST



**MERCURE**  
MANCHESTER NORTON GRANGE  
HOTEL



# CONFERENCES

at Mercure Norton Grange Hotel

## OUR USP'S FOR YOUR MEETINGS



3 miles drive from J20 on M62



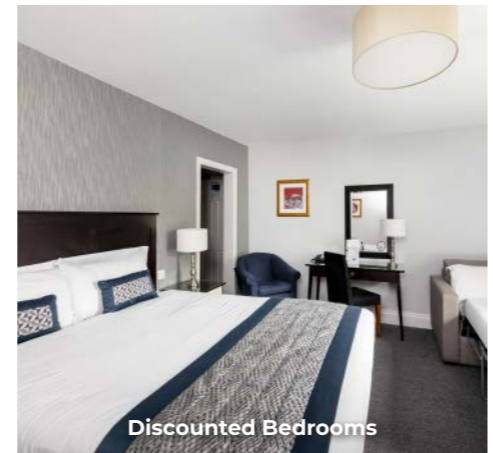
200 car park - vans & cars



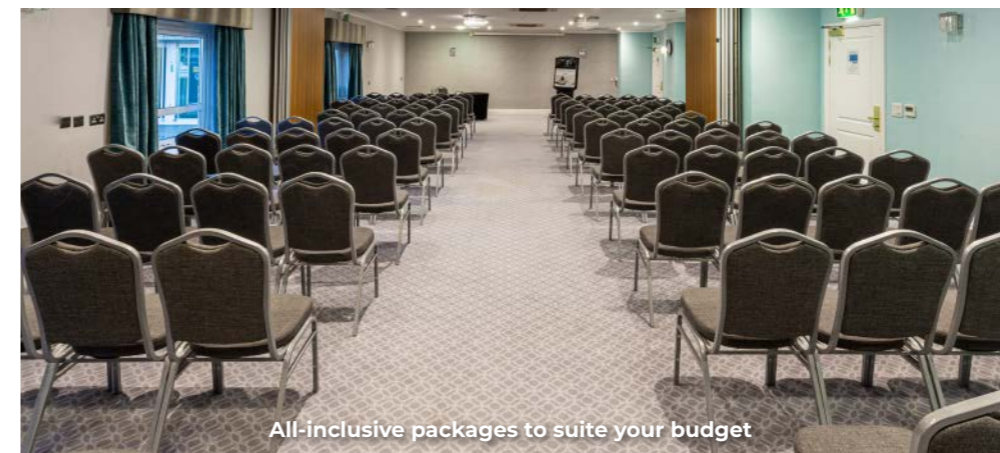
EV charging point 2 mins drive



Free WiFi



Discounted Bedrooms



All-inclusive packages to suite your budget



9 fully equipped meeting rooms



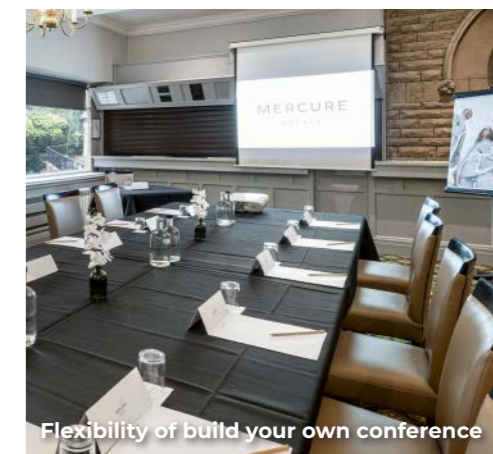
Pickwick Bar with Starbucks Coffee



5 Star hygiene rated kitchen



Audio visual equipment on hire



Flexibility of build your own conference

The 4-star Mercure Manchester Norton Grange Hotel is set in tranquil countryside and its own landscaped grounds with views over the Pennine hills. Situated in peaceful countryside with views over the Pennine hills, yet only one mile from Junction 20 of the M62 and eight miles from Manchester City Centre, whether you are hosting an elaborate reception, private celebration or fully themed evening, the hotel can provide any kind of event that North Manchester requires.



## UNIQUE 4-STAR MEETING VENUE IN A TRANQUIL SETTING

With nine dedicated conference rooms, the hotel has flexibility to host events ranging from one-to-one interviews to board meetings and large conferences for up to 220 delegates. All rooms include WiFi, comfortable settings and natural light, while others benefit from private facilities and patio access.

Guests to the hotel can also enjoy comfortable accommodation in one of the 81 en-suite refurbished bedrooms while taking advantage of the hotel's extensive facilities include extensive grounds, restaurant and bar, plus on-site facilities.

### Hotel facilities at a glance:

- 9 meeting rooms
- 81 en-suite bedrooms
- Indoor team building
- Outdoor team building
- On-site spa and leisure facilities
- 24 hour room service
- Air conditioning
- Super speed fibre optic wi-fi
- Full food & beverage offering
- Complimentary on-site parking

### Nearby attractions:

- Manchester city centre
- Trafford Shopping Centre
- Old Trafford and City of Manchester football grounds
- Chill Factor® Indoor Skiing
- Hollingworth Lake
- Rochdale Football Club
- Golf nearby
- Rochdale Town Hall
- Bury Market

# HOPWOOD SUITE



## HOPWOOD SUITE FEATURES:

- Large LCD Projector and screen
- In-built PA System
- Natural Light
- Private Breakout Space/Bar
- Air conditioning/Heating
- Microphone
- L17.5m x W19.7m x H3m
- Room can be partitioned into 2



Room	Capacities							Features		
	Theatre	U-shape	Boardroom	Classroom	Fishbone	Banquet	Cabaret	Bar	Controllable lighting	Private facilities
<b>Hopwood Suite</b> L17.5m, W19.7m, H3m	220	60	60	120	100	140	110	✓	✓	✓
<b>Hopwood 1</b> L10.9, W9.7m, H3m	120	50	50	50	50	60	48	✓	✓	✓
<b>Hopwood 2</b> L6.7m, W9.7m, H3m	50	25	30	25	40	30	29		✓	✓
<b>Hopwood Bar</b> L9.4m, W6.7m, H3m	25	15	15	12	n/a	30	24	✓	✓	✓

# SPRINGHILL SUITE



## SPRINGHILL SUITE FEATURES:

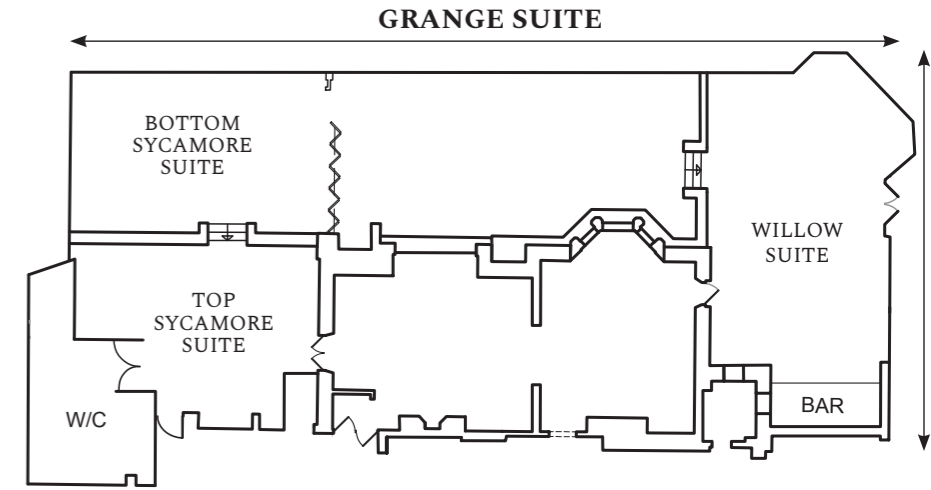
- LCD Projector and screen (available for hire)
- Natural Light
- Communal Breakout Space
- Air conditioning/Heating
- PA System with Microphone (available for hire)
- L16.4m x W7.3m x H2.53m
- Room can be partitioned into 2



	Capacities							Features		
	Theatre	U-shape	Boardroom	Classroom	Fishbone	Banquet	Cabaret	Bar	Controllable lighting	Private facilities
<b>Springhill Suite</b> L16.4m, W7.3m, H2.53m	120	60	60	70	50	70	56		✓	✓
<b>Springhill 1</b> L8.2m, W7.3m, H2.53m	50	25	30	30	n/a	30	30		✓	✓
<b>Springhill 2</b> L8.2m, W7.3m, H2.53m	50	25	30	30	n/a	30	30		✓	✓

# GRANGE SUITE

INCLUDING SYCAMORE & WILLOW SUITE



### GRANGE SUITE FEATURES:

- LCD Projector (available for hire) and screen
- Natural Light
- Communal Breakout space
- Heating / Air conditioning.
- PA System with Microphone (available on hire)
- Grange Suite can be divided in to 6 syndicate rooms based on your needs
- Private Bar
- Private Toilets



	Capacities							Features	
	Theatre	U-shape	Boardroom	Classroom	Fishbone	Banquet	Cabaret	Bar	Controllable lighting
<b>Top Sycamore</b> L8.53m, W 6.5m, H2.84m	30	18	20	15	15	30	20	✓	✓
<b>Bottom Sycamore</b> L8.77m, W 5.4m, H3.31m	30	18	20	15	15	30	20	✓	✓
<b>Grange</b> L13.4m, W 5.8m, H3.31m	50	25	30	30	n/a	30	30	✓	✓
<b>Willow</b> L9.8m, W5.92m, H2.8m	30	18	20	15	15	30	20	✓	✓

# BOARDROOMS



# CONFERENCE PACKAGES

PACKAGE 1 - £50 Minimum of 10 people	PACKAGE 2 - £43 Minimum of 10 people	PACKAGE 3 - £35 Minimum of 10 people	Package 4 £30 Minimum of 10 people
Bacon & egg rolls on arrival	Egg rolls on arrival		
Unlimited tea & coffee with 4 top-ups of snack bars / biscuits / mini cakes / pastries	Three servings of tea & coffee with snack bars / biscuits / mini cakes / pastries	Two servings of tea and coffee	Two servings of tea and coffee
Three course hot & cold buffet	Two course hot & cold buffet	Two course hot & cold buffet	Sandwich, Chips and Salad Lunch
Still & sparkling water	Still & sparkling water	Still & sparkling water	Still & sparkling water
Two jugs of cordial per table			
Sweet treats or mints	Sweet treats or mints	Sweet treats or mints	Sweet treats or mints
Pads, pens & name cards	Pads, pens & name cards	Pads, pens & name cards	Pads, pens & name cards
Flipchart and marker pens	Flipchart and marker pens	Flipchart and marker pens	Flipchart and marker pens
LCD projector & screen	LCD projector & screen	LCD projector & screen	LCD projector & screen
Free car park	Free car park	Free car park	Free car park
Use of super speed fibre optic Wi-Fi	Use of super speed fibre optic Wi-Fi	Use of super speed fibre optic Wi-Fi	Use of super speed fibre optic Wi-Fi
Dedicated conference assistant on the day			
Room hire	Room hire	Room hire (Half hire for less than 10 delegates)	Room hire (Half hire for less than 10 delegates)

## CREATE YOUR OWN CONFERENCE PACKAGE

Our room hire includes-hire of the room, water & sweets in the meeting room, Flip chart, Pens, pads and name cards, Wireless internet & free car park

Room Hire	Full day / 8 hours	Half Day / 4 hours
Hopwood 1	£550	£325
Hopwood 2	£250	£180
Hopwood Full Suite	£775	£460
Springhill 1	£450	£275
Springhill 2	£450	£275
Springhill Full Suite	£675	£400
Willow	£300	£200
Sycamore	£400	£275
Grange Suite	£800	£500
Board room 1, 2 & 3	£125	£100

£35 per hour, 2 hours minimum stay applies

## PRICES:

Refreshments - Tea & Coffee	£3.00
Refreshments - Tea & Coffee with Pastries, Biscuits, Mini-Cakes	£4.50
Arrival Refreshments - Tea & Coffee with Bacon & Egg Rolls	£7.00
Selection of Sandwich & Chips Lunch	£15.00
Selection of Sandwich, Chips, Salad, Cold Meat Platter Lunch	£18.50
Two Course Hot & Cold Buffet Lunch	£22.50
Juice Per Jug	£8.00

## EQUIPMENT

Extra Flip Chart	£25.00
Screen	Depends on Size
LCD Projector	£65.00
Portable Mini Speaker	£25.00
Photo Copy / Printing (Black & White)	£0.35 per sheet
Photo Copy / Printing (Colour)	£0.70 per sheet

# ACCOMMODATION



The Hotel boasts 81 refurbished contemporary rooms, all with wireless internet and satellite TV.

With a number of room types, your comfort is assured; Classic room, Family room, Privilege room and also a beautifully appointed Suite.

Check in from 3pm / Check out 12 midday. Early check in / Late check out can be arranged, subject to charge and availability.

All residents can enjoy full access to our top class Spa & Leisure facilities during their stay with us.

## EXTRA SERVICES;

- Dry cleaning
- Transport arrangements
- Newspapers

Please be advised, we may have some events with late night music on some nights.

## ROOMS AT A GLANCE

- 81 rooms
- 4 reduced mobility rooms
- 4 connecting rooms
- Cribs on request



## ALL ACCOR MEETING PLANNER POINTS

Unlock Exclusive Rewards with ALL Meeting Planner Plan Events. Earn Points. Enjoy Limitless Benefits.

Join the ALL Meeting Planner and earn points every time you organise an event. Book workspaces wherever you need, whenever you want. 2,400 hotels across the world, from luxury to budget-friendly.

### Benefits:

- **2 euros spent = 1 Reward point + 1 Status point**  
For all your events and in all our hotel ranges, spend 2 euros and get 1 Reward point and 1 Status point.
- **Flex to fit**  
Finance future events using your points. Or use them for your next trip, for concert tickets, or a match. Your points, your choice.
- **Sharing points**  
You can also share your points with other members of ALL.

- **Points, whenever.**  
There are no blackout dates on Reward points. Use them whenever you choose.
- **Points and peace of mind**  
There are no expiry dates on your points. No rush, no fuss.
- **Plan more, earn more**  
Earn even more Reward points whenever you plan an event.
- **Free membership**  
It's quick and easy to join the ALL Meeting Planner.

### MAKE EVERY EVENT REWARDING!

Turn your event planning into a rewarding experience with ALL Meeting Planner. Earn points, enjoy exclusive benefits, and elevate your business meetings and events.

JOIN NOW



## HYBRID MEETINGS

CONNECT. COLLABORATE. SUCCEED.

Bring your team together—wherever they are—with our state-of-the-art Hybrid Meeting Facilities at Mercure Norton Grange Hotel. Whether hosting a corporate conference, training session, or business presentation, we ensure a smooth and engaging experience for both in-person and remote attendees.

### Why Choose Our Hybrid Meeting Solutions?

- ✓ **Cutting-Edge Technology** – High-definition video conferencing, crystal-clear audio, and seamless screen sharing.
- ✓ **High-Speed Connectivity** – Reliable, secure, and fast internet for uninterrupted virtual participation.
- ✓ **Flexible Meeting Spaces** – Fully equipped conference rooms tailored to your needs.
- ✓ **Technical Support** – On-site professionals to ensure a flawless hybrid experience.
- ✓ **Sustainable & Cost-Effective** – Reduce travel expenses and your carbon footprint while maintaining productivity.





# GETTING HERE:

## BY ROAD:

From the M62: exit at J20, follow the A627 south towards Oldham and take the first slip road (A664). At the first roundabout take the second exit. At the second roundabout take the fourth exit onto Manchester Road. The hotel is half a mile further on the left-hand side. From the M1: exit at J42 onto the M62 (J29) towards Leeds. Exit at J20 and follow the above directions.

## BY RAIL:

Rochdale Rail Station (approximately 9 minutes)

## BY AIR:

Manchester International Airport, 22.5 miles (approximately 30 minutes)



For further information on  
Mercure Manchester Norton Grange  
Hotel and to discuss your meeting  
requirements please contact:

**T: 01706 630788**

**E: h6631-sb@accor.com**

Mercure Manchester  
Norton Grange Hotel Manchester Road,  
Castleton,  
Rochdale OL11 2XZ  
(SatNav: M24 2UB)

**MERCURE**  
MANCHESTER NORTON GRANGE  
HOTEL

